

# Assisi Swan needle-scissors Etui Swans Sampler Stitchers Guild



Giulia Punti Antichi GPA

Giulia Manfredini

Via Palestro 16, 54100 Massa ITALY

\*39 0585 499103

[www.puntiantichi.com](http://www.puntiantichi.com)

[info@puntiantichi.com](mailto:info@puntiantichi.com)

# ASSISI SWAN needle-scissors ETUI for the SWAN SAMPLER STITCHERS

Design By: Giulia Manfredini  
Copyright By: Giulia Manfredini  
**Giulia Punti Antichi "GPA"**  
[www.puntiantichi.com](http://www.puntiantichi.com)

## List of materials:

**Fabric:** Hog Wild Blue linen 32 ct from **R & R Reproductions**: 18" W by 9" H

Linen cut size includes a 1½" margin all the way around stitching for booklet, and 1" margin for scissors pocket.

## **Threads**

- One skein each of **The Caron Collection Waterlilies** silk:  
045 Flame, 183 Santa Fe, 198 Arroyo
- One skein each of **The Caron Collection Soie Cristale** silk:  
1071 Dark Blue

**Needle:** size 28 tapestry needle

## Stitch Count:

- **Logo on front page:** 75 W x 88 H
- **Scissors pocket:** 35 W x 52 H

## **Materials for finishing:**

- a piece of cameo-rose light blue-shaded silk fabric, 13" W x 8" H for inside finishing of the etui
- 183 Santa Fe silk thread for cording
- a piece of Holland Wool Felt cool blue, 3½" W x 6 6/8" H, for the notebook, and 3½" W x 4½" H for the scissors pocket, from **The Twining Thread**.
- one little light blue mother of pearl button for the scissors pocket
- batting, HeatnBond Original No-Sew Light Bond adhesive, polyester thread for sewing the pieces.
- **Note:** a kit with the **Mother of Pearl Blue Button** and **cameo-rose light blue-shaded silk fabric** for finishing the etui is available from **Giulia Punti Antichi** at the price of 4.00\$ (shipping charges not included).

## **PRELIMINAR NOTES**

Italian Assisi work is characterized by stylized flowers and animals created by void spaces within a background worked in cross stitch. In the original Assisi Stitch, cross stitches are realized over three threads of fabric, but in this design you will cross stitch with one ply of silk over one or two threads of fabric following symbols in chart.

While stitching the logo, start stitching the pink background around the swan with Flame, then stitch the octagonal frame with Santa Fe. The logo background is stitched in the traditional Danish method, working stitches in a row. The octagonal frame of logo and the scissors pocket frame are stitched with Santa Fe by completing the stitches one at the time, and then moving to the following one, in order to

enhance the variation of the color. Complete these two sections with Holbein Stitch or Back Stitch, over two threads of fabric, with one ply of silk 1071 Dark Blue . Backstitch outside scrolls around logo and scissors pocket with Arroyo (please do not use Holbein Stitch here!).

In the original Assisi Stitch Holbein Stitch is the only accepted stitch to highlight void spaces or realize scrolls and trims. For this etui, since the back of needlework will be covered after finishing, I would advise you to use Back Stitch for all sections instead of Holbein Stitch.

There are in fact two main reasons why you would be better off using Back Stitch.

The first one is due to the fact that the Holbein Stitch with variegated threads gives a mottled appearance while going back and forth, and this is not so nice, particularly for scrolls. Back stitching instead will enhance color variations of variegated silk.

The second reason is that Back Stitch is easier to stitch and you can see the design immediately, stitch by stitch, while with Holbein Stitch you have to plan ahead to leave spaces in between stitches to be filled when completing the trip back with the needle.

Cross stitch and back stitch cartouche at the bottom of logo with Flame. Cross stitch "**Swan Sampler Stitchers**" over one linen thread using one ply of Arroyo.

Cross stitch your initials over two linen threads inside the empty space of the scissors pocket following symbols. You may cross stitch over one if you find it difficult to insert your initials in the given space.

## **FINISHING INSTRUCTIONS**

- 1) **Scissors pocket:** cut a piece of felt as per given template. Center template to the stitched design of scissors pocket and trim linen, approximately 5/8" beyond template. Finger press needlework against felt with seam allowance down and blind stitch two sections together with sewing thread. Make a small buttonhole loop at the top scissors pocket with one ply of Arroyo, choosing a blue section of this thread.
- 2) **Felt notebook:** fold felt piece in two, in order to have one page 3" high and the other one 3 6/8" high. Darn Stitch at 1/8" inside the folded line with one ply of Arroyo. Buttonhole Stitch with the same thread around outside edge of needle book.
- 3) **Needle book:** cut a piece of Heat-n-Bond Original No-Sew Light Bond adhesive, 11" W x 6" H, center it on the cameo-rose light blue shaded silk fabric. Cut a piece of batting of the same size and heat bond it to the silk fabric. Trim silk fabric approximately 5/8" beyond batting for seam allowance. Find the center of inside front page and inside back page.
- 4) **Assembling inside pages:** find the center of inside front page and inside back page. Blind stitch the longest page of felt needle notebook to silk fabric, in the center of the inside front page. Blind stitch bottom and lateral lower edges of scissors pocket to silk fabric, in the center on the inside back page. Attach the little light blue Mother of Pearl button with one ply of Arroyo, choosing a blue section of this silk thread.
- 5) **Cording threads:** make two twisted cording 11" long with Santa Fe silk thread. Make a tight knot at the end of each cord and trim cords 5/8" beyond the knot in order to get a small fringe.
- 6) **Assembling etui:** Center stitched design of needlework against inside pages, with the batting facing the wrong side of needlework. Pay attention to center the design, swan and cartouche, in the middle of front etui page. Trim linen fabric adjusting it to silk fabric. You have now 5/8" of silk and linen fabric for seam allowances. Finger press needlework against batting and baste seam allowance down. Please, pay attention to the fact that the linen fabric should be mounted horizontally not too tense, in order to follow the inside silk fabric and batting when the etui pages are closed. Blind stitch two sections together with sewing thread. While stitching the two vertical edges do not forget to

insert the cording threads, centering them to the lateral edges of the Swan logo, one for the back page and one for the front, leaving knot and fringe on the free end.

### **ADDITIONAL NOTES AND THANKS**

This piece is dedicated to my Swans friends **Margene Smith** and **Loree Ann Romriell** who encouraged me to design something for their Guild. The **Swan Sampler Stitchers** of Salt Lake City have done so much to preserve, remember, and teach the needlework art of the past.

One of their tokens of love is the special book "**Daughters of the Utah Pioneers Museum Samplers**". The book is a lovely travel to the past, full of history and pleasant notes about the life of stitchers at that time. The photos, back and front, of the samplers are very well detailed as well as all information about the samplers. It is due to this book that I got to know the Swans and I was able to meet some of them during my trip to the USA in the summer 2004. It was this book that inspired me to design this little Italian Assisi Swan Etui. It is also due to my dearest friend Ellen Chester if I got to know this book through her captivating newsletter "**With my needle and pen**", posted under her web site **www.withmyneedle.com**.

I'm deeply grateful to **Lois Caron** for supplying the **Silk Waterlilies** and **Soie Cristale** silk threads, and for the beauty of her colors, which have always inspired my designs and this one in particular. The experience of stitching Assisi Stitch, with these variegated threads, is unexpected and unforgettable. Scrolls and backgrounds get a new life and magic charm when stitched with color shaded threads and when you have the stitched etui in your hands it seems like having a pink swan cameo on a clear sky.

A special person to thank is my dearest friend, **Judy Odell**, who reviewed my finishing instructions. She is a professional finisher with a wonderful web site "**Just a Thought**". Even though I did all the finishing process, it was hard to write it down and Judy's help was such a gift! She is not available for finishing your etui, but you can visit her web site for other beautiful ideas and designs.

Last, but not least, my thanks go to Mrs. **Tamara Bianchi** for her perfection in professionally stitching my piece. In case you need it, she is available for stitching your etui with your initials. For her stitching assistance you can contact **Giulia Puntì Antichi**.

#### **Giulia Puntì Antichi "GPA"**

Giulia Manfredini M.D.

Via Palestro 16

54100 Massa ITALY

\*39(0585)499103

[info@puntiantichi.com](mailto:info@puntiantichi.com)

[www.puntiantichi.com](http://www.puntiantichi.com)

&

#### **Just a Thought**

Judy Odell

5521 Rippon Rd.

Valley Springs, CA 95252, USA

(209)772-3895

[JudyOdell@justathought.net](mailto:JudyOdell@justathought.net)

[www.justathought.net](http://www.justathought.net)

#### **The CARON Collection**

55 Old South Avenue

Stratford, CT 06615 USA

Tel: (203) 381-9999

Fax: 203 381-9003

[www.caron-net.com](http://www.caron-net.com)

&

#### **The Twining Thread**

255 NW Coast St., P.O. Box 485

Newport, OR 97365, USA

Tel: (541) 266-2166

Fax: (541) 265-2164

[jColbert@twiningthread.com](mailto:jColbert@twiningthread.com)

[www.twiningthread.com](http://www.twiningthread.com)

#### **The Swan Sampler Stitchers**

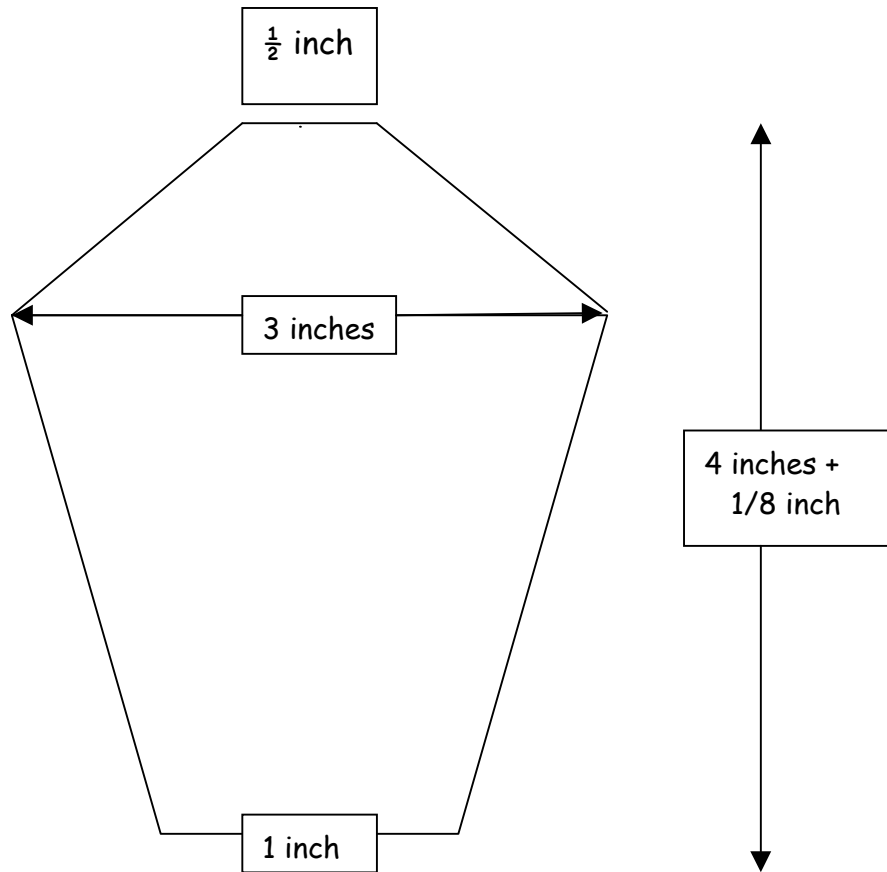
[www.faireneedlenetwork.com/swan](http://www.faireneedlenetwork.com/swan)

&

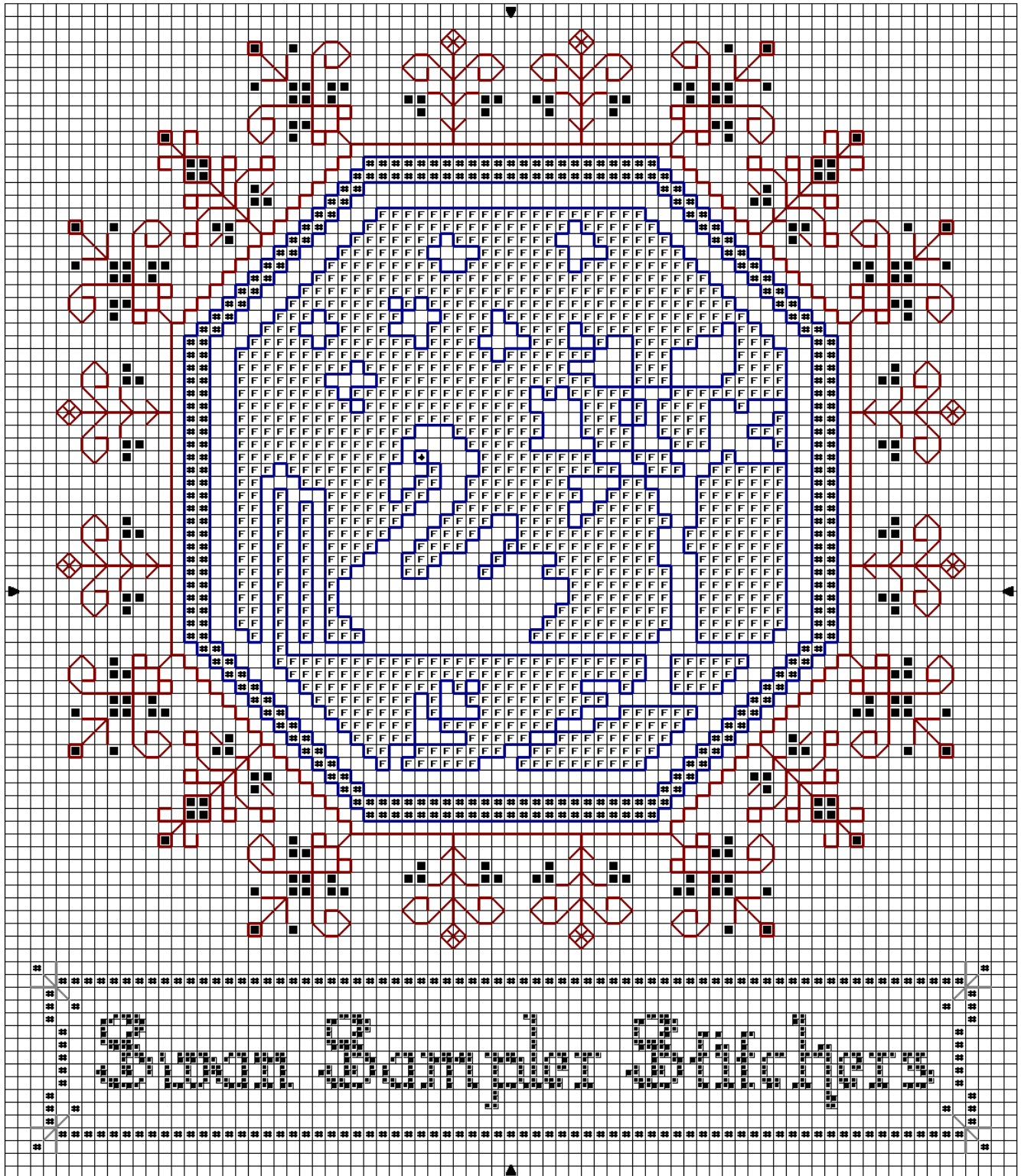
#### **R & R Reproductions**

available in needlework shops

# Assisi Swan scissors template



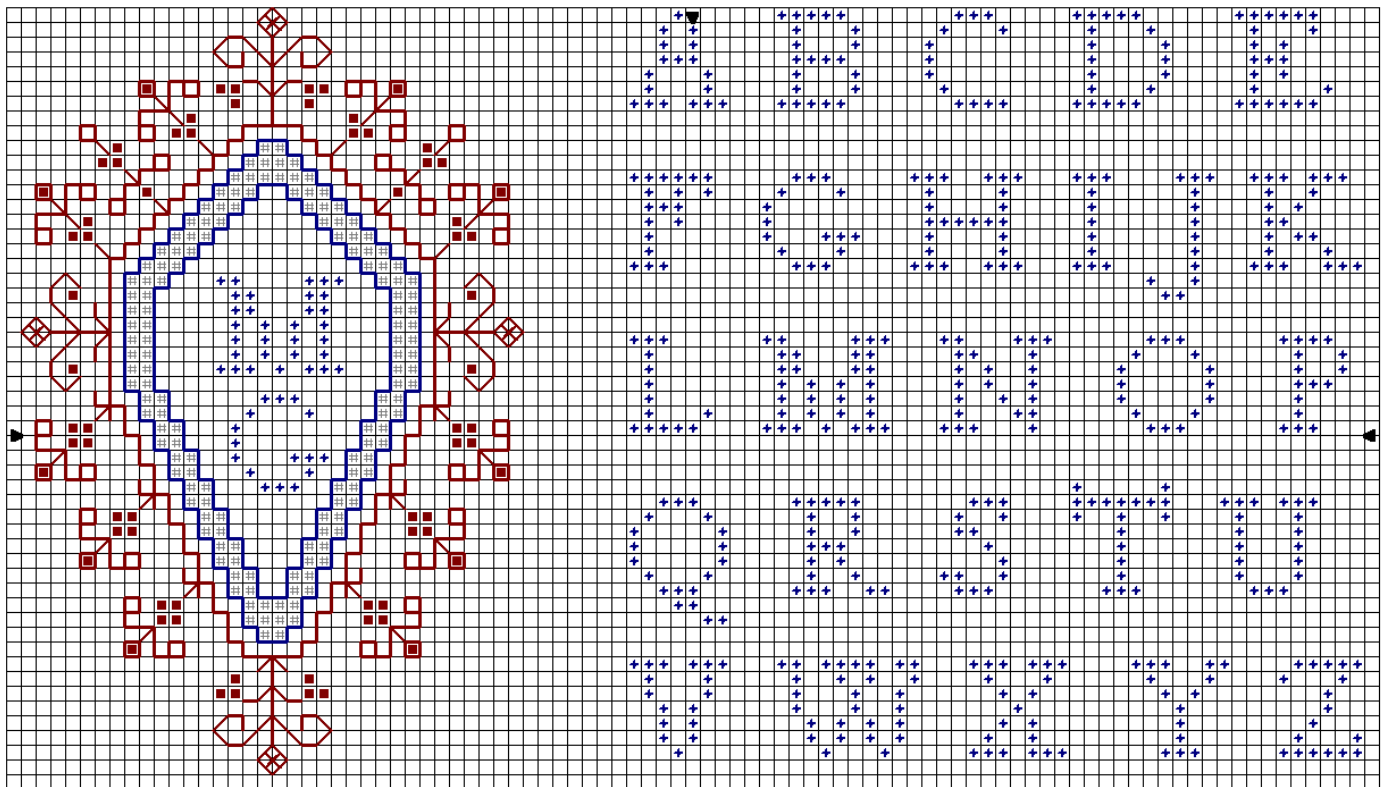
# Assisi Swan



Design By: Giulia Manfredini, inspired by the Swan Sampler Stitches logo

Copyright © Giulia Puntì Antichi GPA [www.puntiantichi.com](http://www.puntiantichi.com)

## Assisi Swan scissors pocket & alphabet



Choose your favorite thread to stitch your initials in the middle space of the scissors pocket, one on top of the other

Assisi Swan

Caron Waterlilies

Cross stitch Over 2 in:

Silk

◆ 1071 SC

1071 SC

F Flame 045

045 Flame

⬛ Santa Fe 183

183 Santa Fe

■ Arroyo 198

198 Arroyo

Cross Stitch Over 1 in:

Silk

■ Arroyo 198

198 Arroyo

Backstitch in:

Silk

— 1071 SC

1071 SC

— Santa Fe 183

183 Santa Fe

— Arroyo 198

198 Arroyo

Stitch Count 75 x 88

Note: Designed for the Swan Sampler Stitchers Guild of Salt Lake City, Utah, USA

Design By: Giulia Manfredini, inspired by the Swan Sampler Stitchers logo

Copyright © By: Giulia Punti Antichi GPA [www.puntiantichi.com](http://www.puntiantichi.com)